

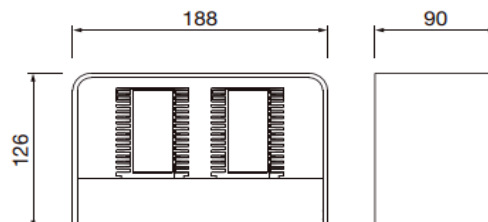
SCHEDA TECNICA PRODOTTO DATASHEET

ARTICOLO: LED Su e Giù CELL 2x9W

CODICE: 32292-2

Caratteristiche meccaniche/Mechanical features:

Corpo/Body:	Alluminio pressofuso/Die-cast aluminium
Colore/Colour:	Nero RAL 9005 /Black RAL 9005
Ottica/Optic:	Regolabile/Adjustable
Schermo/Shield:	Vetro temperato/Tempered glass
Viteria/Screws:	INOX AISI 304
Dissipazione/Dissipation:	Statica/Static
Peso/Weight:	1,5kg



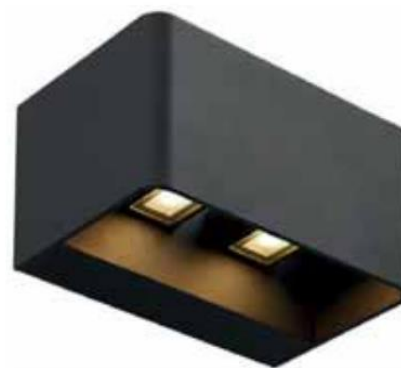
IP65

IK08



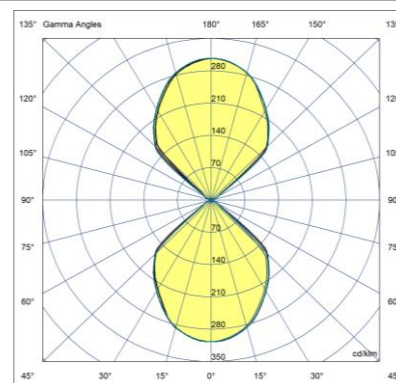
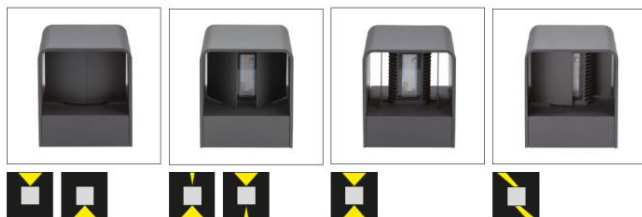
Caratteristiche elettriche/Electrical features:

Alimentazione/Power supply:	220-240V AC 50/60Hz
Potenza/Power:	2x9W
Alimentatore/Driver:	Incluso/Included
Indice Mac Adam / Mac Adam Index:	3
Rischio fotobiologico / Photobiological risk:	RG0
Aspettativa di vita / Life expectation:	50.000h L80/B10



Caratteristiche illuminotecniche/Photometric features:

Tipo di LED/LED type:	LED SMD
Flusso luminoso/Luminous flux:	1500lm
CCT:	3000K
CRI:	>80



Conforme alle seguenti norme/Complying with the following standards:

Sicurezza/Safety:	Generale/General:	EN-60598-1
	Particolari/Particular:	EN-60598-2-1
	Moduli LED/LED Modules:	EN-62031+A1
Sicurezza fotobiologica/Photobiological safety:		EN 62471 (Risk exempt)
Esposizione umana ai campi elettromagnetici/Human exposure to electromagnetic fields:		EN-62493
Immunità EMC/EMC immunity:		EN-61547
Compatibilità elettromagnetica/Electromagnetic compatibility:		EN-61000-3-3
Limiti di emissioni armoniche/Limits of harmonic emissions:		EN-61000-3-2

RoHS compliance



CE

