

Lampade professionali a LED - Professional LED lamp

CRI >90



Dimmerabile con alimentatore a corrente costante vedi Dimmable with constant current power supply see

VEGA 9 LED
HL111 - G53



CDT

Codice Code	mA	W	Beam	K	N° LED	DIM	Vdc	ta °C	lm*	h.	PCS	CCM cm³	
R111/M/B	350mA 9W	500mA 12,5W	700mA 18W	30°	6000	9	OK	27	40	1200 1550 2010	50.000	1	1.120
BIR111/M/B				30°	6000	9	OK	27	40	1200 1550 2010	50.000	1	1.120
NER111/M/B				30°	6000	9	OK	27	40	1200 1550 2010	50.000	1	1.120
R111/M/BN	350mA 9W	500mA 12,5W	700mA 18W	30°	4000	9	OK	27	40	1200 1550 2010	50.000	1	1.120
R111/M/BC				30°	3000	9	OK	27	40	1130 1460 1900	50.000	1	1.120
R111/W/BN	350mA 9W	500mA 12,5W	700mA 18W	40°	4000	9	OK	27	40	1200 1550 2010	50.000	1	1.120
R111/W/BC				40°	3000	9	OK	27	40	1130 1460 1900	50.000	1	1.120

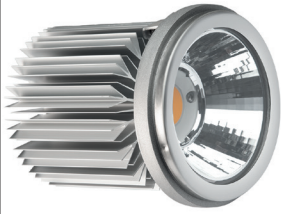
LED MEISSA
HL111 - G53



CDT

Codice Code	mA	Beam	K	N° LED	DIM	Vdc	ta °C	lm*	h.	PCS	CCM cm³	
R111MC/M/BC	350mA 12W	550mA 19W	25°	3000	1	OK	37	40	1650 2560	50.000	1	1.120
R111MC/W/BN	350mA 12W	550mA 19W	40°	4000	1	OK	37	40	1730 2700	50.000	1	1.120
R111MC/W/BC			40°	3000	1	OK	37	40	1650 2560	50.000	1	1.120
R111MC/60/BC	350mA 12W	550mA 19W	60°	3000	1	OK	37	40	1650 2560	50.000	1	1.120

LED CHAMELEON NEW
HL111 - G53

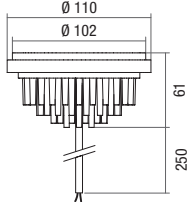


CDT

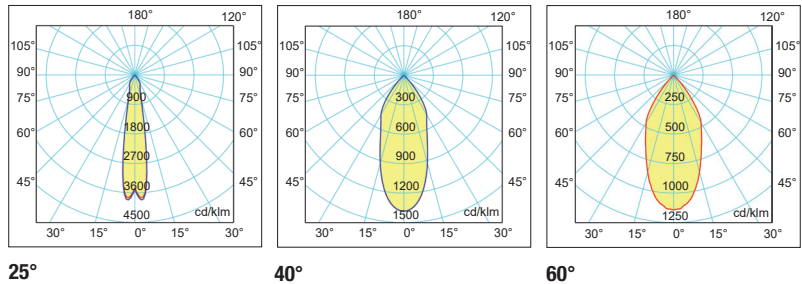
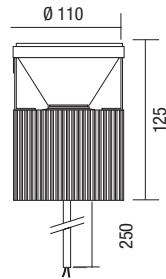
Codice Code	mA	W MAX	Beam	K	N° LED	DIM	Vdc	Nominal Lm (Tc =25°C)	Lm Output	Lm/W	PCS	CCM cm³
R111/50/25/BC	1400	50	25°	3000	1	OK	37	7.650	6.010	120	1	6.800
R111/50/40/BC	1400	50	40°	3000	1	OK	37	7.650	6.010	120	1	6.800
R111/50/60/BC	1400	50	60°	3000	1	OK	37	7.650	6.010	120	1	6.800
R111/50/25/BN	1400	50	25°	4000	1	OK	37	7.650	6.010	120	1	6.800
R111/50/40/BN	1400	50	40°	4000	1	OK	37	7.650	6.010	120	1	6.800
R111/50/60/BN	1400	50	60°	4000	1	OK	37	7.650	6.010	120	1	6.800

A richiesta 6000K - On demand 6000K

LED Vega - LED Meissa - Dimens. (mm)



LED Chameleon - Dimens. (mm)

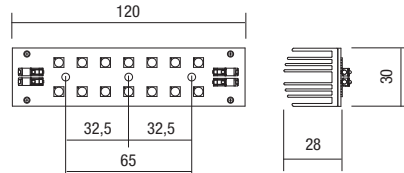


Codice Code	mA MAX	W MAX	Beam	K	LED	DIM	Vdc	Nominal Lm (Tc =25°C)	Lm Output	Lm/W	PCS	CCM cm³
558117	700	18	120°	3000	LED SMD	OK	24	Max 3.200	Max 2.700	157	1	0,720
558118	700	18	120°	4000	LED SMD	OK	24	Max 3.200	Max 2.700	157	1	0,720

LED R7s / RX7s



Dimensioni (mm) - Dimensions (mm)



mA	500	600	700
W	11	13	15
Lm	1.812	2.314	2.700