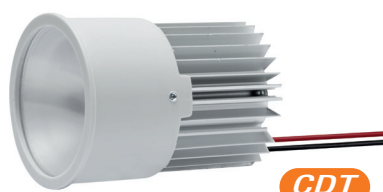


Lampade professionali a LED - Professional LED lamp

LED NAPO - OPTOSPOT PAR16 - MR16



CRI >90

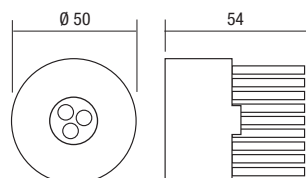


Dimmerabile con alimentatore a corrente costante
Dimmable with constant current power supply

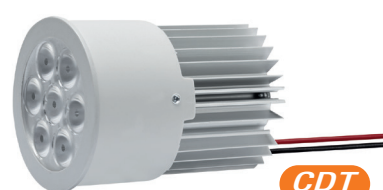
NEW

| Cod. | W max | mA | ° | K | N° LED | DIM | Vdc | lm | ta °C | h. | PCS | CCM cm³ |
|--------------|-------|-----|-----|------|--------|-----|-----|-----|-------|--------|-----|---------|
| R16/D5/40/BC | 8 | 700 | 40° | 3000 | 3 | OK | 9 | 800 | 45 | 50.000 | 10 | 1.564 |
| R16/D5/40/BN | 8 | 700 | 40° | 4000 | 3 | OK | 9 | 800 | 45 | 50.000 | 10 | 1.564 |

Dimensioni (mm) - Maße (mm)



LED ATLAS - OPTOSPOT PAR16 - MR16



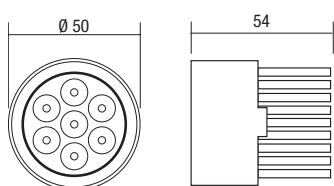
A richiesta
CRI >90
On request



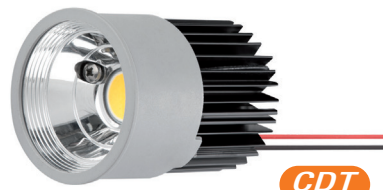
Dimmerabile con alimentatore a corrente costante
Dimmable with constant current power supply

| Cod. | W max | mA | ° | K | N° LED | DIM | Vdc | lm | ta °C | h. | PCS | CCM cm³ |
|-------------|-------|-----|-----|------|--------|-----|-----|------|-------|--------|-----|---------|
| R16/M/B/10 | 10 | 500 | 25° | 6000 | 7 | OK | 21 | 1050 | 45 | 50.000 | 5 | 2.760 |
| R16/M/BN/10 | 10 | 500 | 25° | 4000 | 7 | OK | 21 | 1050 | 45 | 50.000 | 5 | 2.760 |
| R16/M/BC/10 | 10 | 500 | 25° | 3000 | 7 | OK | 21 | 980 | 45 | 50.000 | 5 | 2.760 |
| R16/W/B/10 | 10 | 500 | 45° | 6000 | 7 | OK | 21 | 1050 | 45 | 50.000 | 5 | 2.760 |
| R16/W/BN/10 | 10 | 500 | 45° | 4000 | 7 | OK | 21 | 1050 | 45 | 50.000 | 5 | 2.760 |
| R16/W/BC/10 | 10 | 500 | 45° | 3000 | 7 | OK | 21 | 980 | 45 | 50.000 | 5 | 2.760 |

Dimensioni (mm) - Dimensions (mm)



LED VIOLA - OPTOSPOT PAR16 - MR16



CRI >90



Dimmerabile con alimentatore a corrente costante
Dimmable with constant current power supply

| Cod. | W max | mA | ° | K | N° LED | DIM | Vdc | lm | ta °C | h. | PCS | CCM cm³ |
|--------------|-------|-----|-----|------|--------|-----|-----|------|-------|--------|-----|---------|
| R16COB/25/BC | 13 | 350 | 25° | 3000 | 1 COB | OK | 36 | 1550 | 45 | 50.000 | 5 | 2.760 |
| R16COB/40/BC | 13 | 350 | 40° | 3000 | 1 COB | OK | 36 | 1550 | 45 | 50.000 | 5 | 2.760 |
| R16COB/25/BN | 13 | 350 | 25° | 4000 | 1 COB | OK | 36 | 1700 | 45 | 50.000 | 5 | 2.760 |
| R16COB/40/BN | 13 | 350 | 40° | 4000 | 1 COB | OK | 36 | 1700 | 45 | 50.000 | 5 | 2.760 |

Dimensioni (mm) - Dimensions (mm)

