

# VARIABLE DA INCORPORARE - BUILT-IN DIMMER

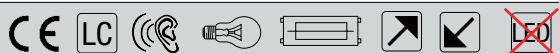


## TOUCH SOLE

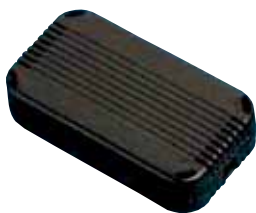


Color	Code	W <small>min. max.</small>	V	Hz	LPH <small>mm</small>	Euro cad.
N	30190/110	40÷300	220-240	50/60	90x55x10,5	37,00
		40÷250	110			

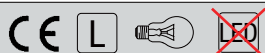
Varialuce di spessore ridotto con comando a sfioramento. Esecuzione da incorporare.  
Dimmer with reduced thickness with **sensorial** control to be incorporated.



- SC** = Controllo a sfioramento  
*Touch control*
- PC** = Controllo a pulsante  
*Push button control*
- G** = Regolazione a gradini  
*Step control*



Article	Color	Code	W <small>min. max.</small>	V	Hz	LPH <small>mm</small>	Euro cad.
RT99PCG	N	RN0147	40÷300	230	50/60	46x87x21	37,00
RT99SCG	N	RN0151	40÷300	230	50/60	46x87x21	37,00



## Comando rotativo - Rotary control



**M11 N** - Cod. R01507  
Euro: 0,60  
Manopola nera alberino  
6mm (Ø21x12mm)  
Black knob 6mm shaft  
(Ø21x12mm)

Article	Code	W <small>min. max.</small>	V	LPH <small>mm</small>	PCS	CCM cm <sup>3</sup>	Euro cad.
<b>706 plus</b>	RN0025	60÷300	220-240	32x46x20	20	2.760	14,00
<b>RT56</b>	RQ9544	75÷300	220-240	45x45x75	20	2.760	7,80

Varialuce da incorporare in corpi illuminanti. Comando rotativo  
*Incorporate dimmer for lighting fixtures. Rotary control.*  
**Leading edge technology**

