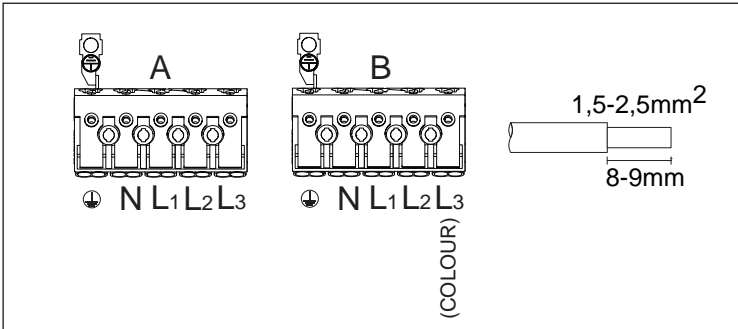


N° massimo di apparecchi collegabili per ogni linea elettrica
Maximum number of devices that can be connected to any electrical line

ءابرهك طخ لكك اهل يصوت نكمي يتلا ةزه ءال ددعل يصق ءال دحل

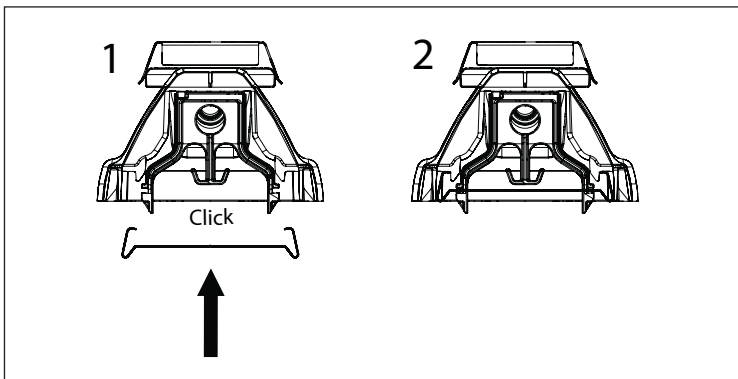
W	10A B	16A B	10A C	16A C
24	10	16	16	26
36	10	16	16	26
45	10	16	16	26



L'installazione può essere eseguita solo da personale qualificato e seguendo le istruzioni. Una qualsiasi altra installazione non sarà ritenuta appropriata. Per una buona installazione la superficie di montaggio dovrà essere piana. Accertarsi che la lampada sia sempre scollegata dalla rete elettrica prima di avviare l'installazione. Non utilizzare la lampada se è danneggiata o se è danneggiato il cavo di alimentazione. Per pulire la lampada utilizzare panni in microfibra. Le modifiche tecniche del dispositivo non sono soggette a preavviso. Smaltire l'apparecchio secondo le norme di riciclaggio.

É vietato lo smaltimento come rifiuto urbano è obbligatoria la raccolta separata a fine vita del prodotto "Consorzio di appartenenza RAEE: Ecolight.
Registro Nazionale dei Produttori N°: IT0802000000670

Installation can only be carried out by an authorized person and according to the mounting instructions. Any other installation is considered to be improper. For well installation and good luminaire work is necessary ensure a planarity of a mounting surface. Make sure that the luminaire is always disconnected from the power supply before the installation work. Do not use the luminaire if damaged or if damaged the power cable. Only damp microfiber cloth can be used for cleaning. Tchnical changes are subjected without notice. Do not dispose the luminaire or its parts as household waste, but make the proper recycling.



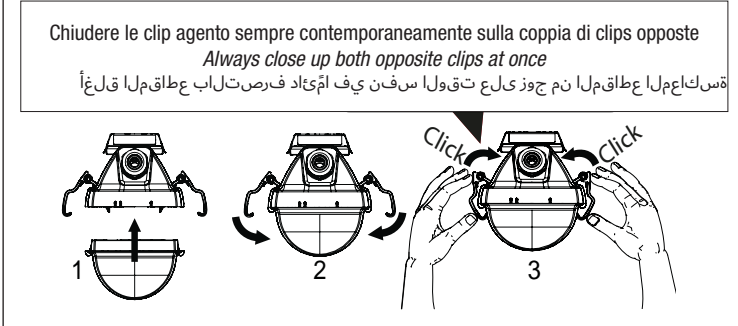
تاميل عتلت اءابءا و نيل هؤم ني فظوم ةطساوب ال تي بئثتلا ءارجل نكمي ال بيكرتلا حطس نوكي نا بجي . اءسا ان رخا تي بئثت ي اءابءا متي نل رايءتلا رءصم نع اءءاء ءابصم ال لصف نم دءاء . ءي ءال تي بئثت لل ءطسم وا هءلء ءلا ءي ءابصم ال مءءست ال . تي بئثتلا ءءب لبق يءابرهك ال فاي لل ال نم ءشمقا مءءسا ، ءابصم ال فيظنءل . ءقاطلا لكس فلت ءلا ءي نم صلءت . راعش ال ءصءء ال ءلهء ال ءل ءنيقءتلا ءاريغيءتلا . ءقيءل ريوءتلا ءءاء ءءاولل ءقو زاهءل

Al momento della chiusura della lampada iniziare sempre dal centro e simmetricamente. Continuare a chiudere verso le estremità della lampada
Always close the clips symmetrically from the middle to the sides of the Imps
ي ف رءتسا . لءءامءم لكشبو زكرم ال نم اءءاء ءءبا ، ءابصم ال ءالءل ءنع ءابصم ال ءايءن ءءاب ءالءل

Accessori NON inclusi - NOT included accessories - ءنم صءم ريغ ءاقءل مءل



Staffa laterale per applicazione a parete
Side bracket for wall application
رءءل ءي بءءل ءي بءء ءءءء



Chiudere le clip agente sempre contemporaneamente sulla coppia di clips opposte
Always close up both opposite clips at once
ءسءءم ال ءاطءم ال نم ءوز ءل ءءءءا سرفن ي ف اءءاء فرصءل ءب ءاطءم ال ءلءل